



# LDLRAD2 Polyclonal Antibody

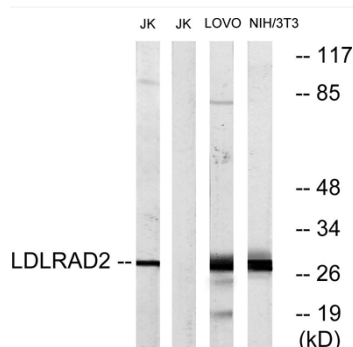
<b>Catalog No</b>	YP-Ab-13391
<b>Isotype</b>	IgG
<b>Reactivity</b>	Human;Rat;Mouse;
<b>Applications</b>	WB;ELISA;IHC
<b>Gene Name</b>	LDLRAD2
<b>Protein Name</b>	Low-density lipoprotein receptor class A domain-containing protein 2
<b>Immunogen</b>	The antiserum was produced against synthesized peptide derived from human LDLRAD2. AA range:130-179
<b>Specificity</b>	LDLRAD2 Polyclonal Antibody detects endogenous levels of LDLRAD2 protein.
<b>Formulation</b>	Liquid in PBS containing 50% glycerol, 0.5% BSA and 0.02% sodium azide.
<b>Source</b>	Polyclonal, Rabbit,IgG
<b>Purification</b>	The antibody was affinity-purified from rabbit antiserum by affinity-chromatography using epitope-specific immunogen.
<b>Dilution</b>	WB 1:500-2000;IHC-p 1:50-300; ELISA 2000-20000
<b>Concentration</b>	1 mg/ml
<b>Purity</b>	≥90%
<b>Storage Stability</b>	-20°C/1 year
<b>Synonyms</b>	LDLRAD2; Low-density lipoprotein receptor class A domain-containing protein 2
<b>Observed Band</b>	29kD
<b>Cell Pathway</b>	Membrane; Single-pass type I membrane protein.
<b>Tissue Specificity</b>	Hippocampus,
<b>Function</b>	similarity:Belongs to the LDLR family.,similarity:Contains 1 LDL-receptor class A domain.,
<b>Background</b>	similarity:Belongs to the LDLR family.,similarity:Contains 1 LDL-receptor class A domain.,
<b>matters needing attention</b>	Avoid repeated freezing and thawing!
<b>Usage suggestions</b>	This product can be used in immunological reaction related experiments. For more information, please consult technical personnel.



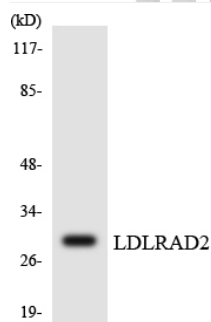
## Products Images



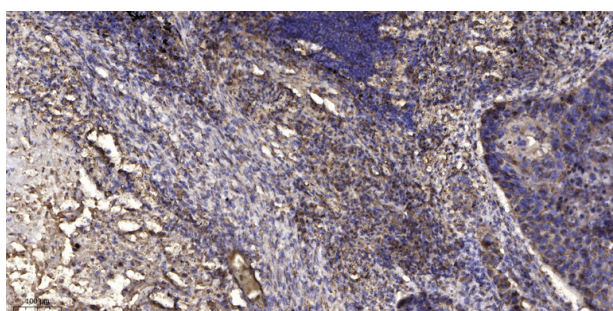
Western Blot analysis of various cells using LDLRAD2 Polyclonal Antibody diluted at 1:500



Western blot analysis of lysates from Jurkat, LOVO, and NIH/3T3 cells, using LDLRAD2 Antibody. The lane on the right is blocked with the synthesized peptide.



Western blot analysis of the lysates from HepG2 cells using LDLRAD2 antibody.



Immunohistochemical analysis of paraffin-embedded human Squamous cell carcinoma of lung. 1, Antibody was diluted at 1:200(4° overnight). 2, Tris-EDTA,pH9.0 was used for antigen retrieval. 3,Secondary antibody was diluted at 1:200(room temperature, 45min).